

# Profile

THE CONSECO INSURANCE COMPANIES



CONSECO®  
Step up.

## Strength to support your success

The Conseco insurance companies serve millions of individuals and families from coast to coast. We are committed to supporting you by continually upgrading our infrastructure and striving to maintain a culture of superior service and efficient operation.

## Serving middle Americans

The Conseco insurance companies strive to be premier providers of life, annuity and supplemental health insurance products to middle Americans.

PRODUCT	NUMBER OF POLICIES*
Supplemental health	888,389
Life	712,780
Annuity	60,020
<b>Total</b>	<b>1,661,189</b>

## Financially strong

The Conseco insurance companies are strong, with \$689 million in capital, surplus and investment reserves to protect contract holders.

## Investments under management

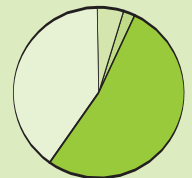
Our main consideration is the safety of our policyholders.

The Conseco insurance companies have \$9.7 billion of investments under management. In our portfolios, 93% of our bonds are investment grade. Our portfolios are well diversified—drawing from more than 60 sectors. They are also flexible—with 73% of bonds available to be liquidated within one week, if needed to meet policyholder claims.



Investments by type\*\*

- Bonds 82%
- Mortgage and real estate 4%
- Cash and short-term investments 9%
- Policy loans 2%
- Preferred and common stock 3%



Bonds by NAIC rating\*\*

- Class 1: Highest quality 53%
- Class 2: High quality 40%
- Class 3: Medium quality 5%
- Class 4 and below 2%

\*Policies are underwritten by Conseco Life Insurance Company, Conseco Health Insurance Company, Conseco Senior Health Insurance Company, Washington National Insurance Company and Conseco Insurance Company, a life and health insurance company. These companies are subsidiaries of Conseco, Inc. The financial condition and contractual obligations of Conseco, Inc., are separate from its subsidiaries, as are its subsidiaries from each other.

\*\*All data as of December 31, 2008. Investments by type excludes investments in subsidiaries.

CONSECO SERVICES, L.L.C.  
11825 N. Pennsylvania Street  
Carmel, IN 46032

(04/09) 132757

© 2009 Conseco Services, L.L.C.

**conseco.com**

# Profile

## CONSECO, INC.



CONSECO®  
Step up.

### Get to know Conseco, Inc.

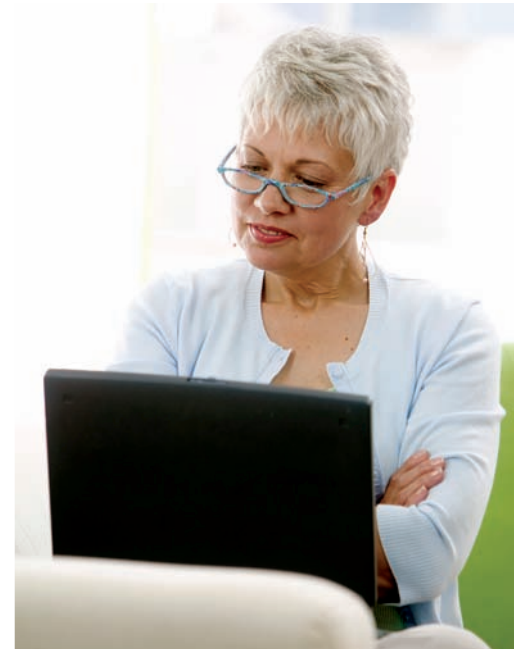
Our parent company, Conseco, Inc., is an American company headquartered in Carmel, Indiana. Incorporated in 1979, Conseco began operations in 1982 and became a public company in 1985.

Conseco, Inc., has \$1.6 billion of shareholders' equity, more than \$4.1 billion in annual revenue and \$28.8 billion of assets. These solid financials, combined with our history in the industry and market expertise, add up to peace of mind for you.

Today, Conseco is the "parent" of a whole family of insurance companies. In addition to the Conseco insurance companies, Bankers Life and Casualty Company and Colonial Penn Life Insurance Company are wholly-owned subsidiaries of Conseco, Inc.

All together, the Conseco family of companies, along with a national network of agents and brokers, help more than 4 million customers step up to a better, more secure future.

*All data as of December 31, 2008.*



The Conseco companies...  
serving more than  
4 million customers.

### Corporate information

Conseco common stock is traded on the New York Stock Exchange under the symbol "CNO."

### conseco.com

Our Web site is loaded with tools, tips and information to help you achieve your financial goals. In our **Online Service** area, you may e-mail us your questions or concerns for a prompt reply.

CONSECO SERVICES, L.L.C.  
11825 N. Pennsylvania Street  
Carmel, IN 46032

(04/09) 132757  
© 2009 Conseco Services, L.L.C.